



HD

DEWATERING PUMPS

50Hz

make future flow

HD Series

SUBMERSIBLE DEWATERING PUMPS

- Compact, robust and easy handling for all construction and civil engineering dewatering application conditions.
- Stainless steel (SUS304) outer casing, the self-cooling motor is suitable for continuous duty and low water level conditions.
- Standard accessories include the cable with an epoxy resin sealed water-resistant cable base, Auto-cut motor protector, double mechanical seals, oil seal design, and High Solid Epoxy coating.
- High efficient special impeller design in High Chrome Alloy steel (HiCrFC), with a hardness of 55 - 60 Rockwell, to stand high abrasive applications.
- The pump internal castings are all protected by the high solids epoxy coating, which can prolong the metal life and avoid corrosion and oxidation.
- The mechanical seal bracket is covered by EPDM with anti-abrasive wear for HD 15~20HP models.
- Optional ADTC (Adapter Connection) Casing to connect suction with inline pipe, allowing surface/ inline/deep well pumping.

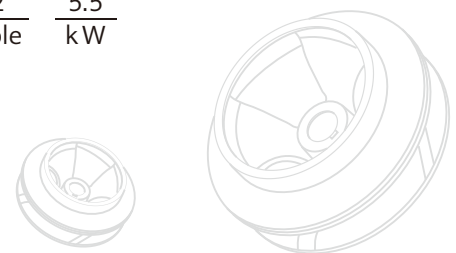


SPECIFICATIONS

Spec.	Description
Liquid Temp.	0~40°C (32~104°F)
Motor	2P (3000rpm) • Dry Motor
Insulation	Class F • Class H
Protection	IP68
Protector	Auto-cut
M.seal Type	Double M.seals
Impeller Type	Open • Close
Item	Material
Outer Cover	SUS304 / X5CrNi18-10
Upper Cover	FC200 / GG-20
Motor Frame	FC200 / GG-20
Shaft	SUS403 / X5Cr13 • SUS304 / X5CrNi18-10 • SUS420J2 / X30Cr13
M.seal	CA/CE & SiC/SiC
Casing	FC200 / GG-20 • FCD500 / GGG-50
Impeller	HiCrFC
Wear plate	HiCrFC (For Open)
Wear ring	HiCrFC (For Close)
Cable	VCT or H07RN-F

PRODUCT NOMENCLATURE

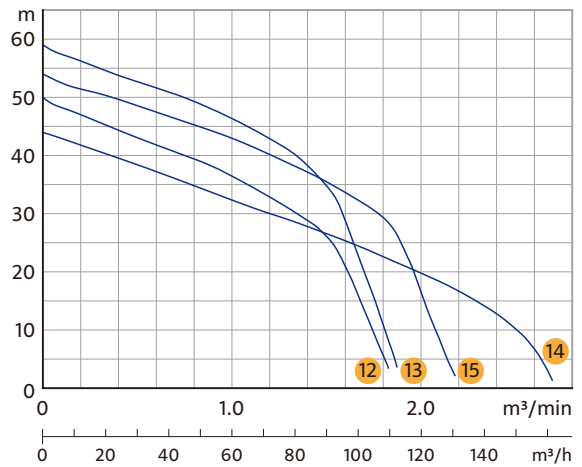
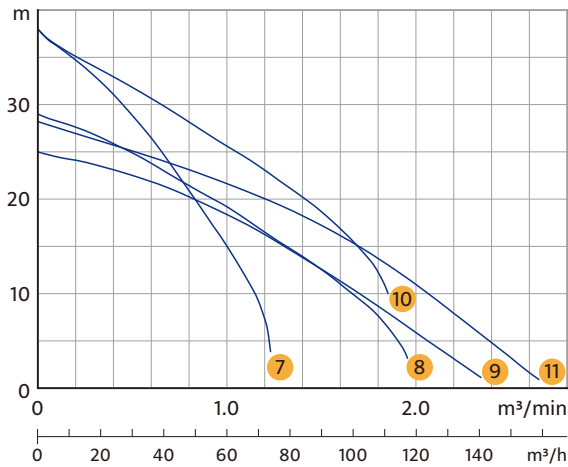
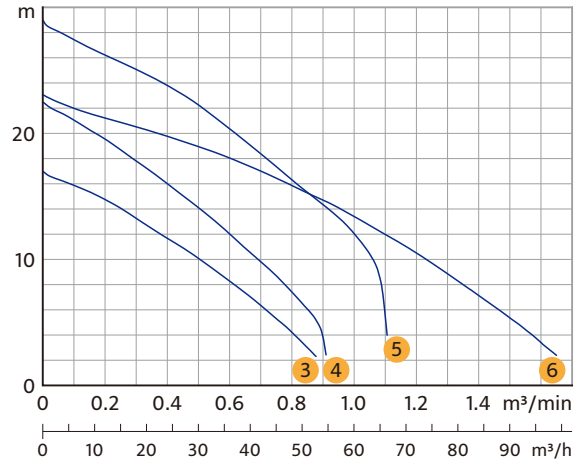
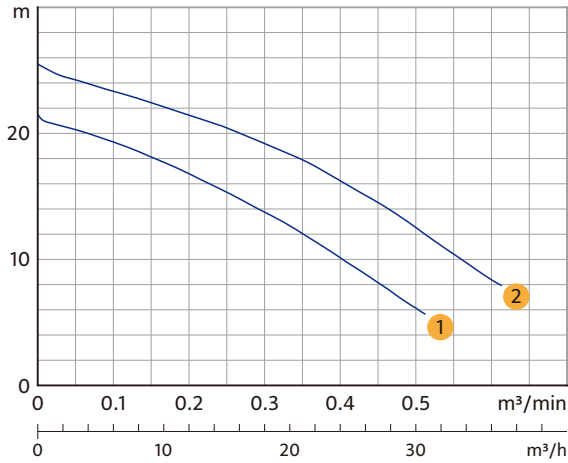
$\frac{100}{\text{Discharge mm}}$
 $\frac{\text{HD}}{\text{Type}}$
 $\frac{2}{\text{Pole}}$
 $\frac{5.5}{\text{kW}}$



APPLICATIONS

- Civil engineering, dewatering, tunneling, groundworks, mining, and manhole sewer
- Industrial wastewater dewatering of fluids containing solid sediments
- Portable use for contractors, installers, and industry

PERFORMANCE CURVES AND SPECS



Model	Output HP(kW)	Discharge Inch(mm)	Phase Ø	Start Method	Standard	Max.	Solid Passage mm	Weight kg	
					m-m³/min			1Ø	3Ø
1 50HD21.5	2(1.5)	2" (50)	1	Capacitor	15-0.25	21.5-0.55	10	40	36
2 50HD22.2	3(2.2)	2" (50)	1	Capacitor	19-0.3	25.5-0.65	10	44	39
3 80HD21.5	2(1.5)	3" (80)	1	Capacitor	10-0.5	17-0.9	10	40	36
4 80HD22.2	3(2.2)	3" (80)	1	Capacitor	14-0.5	22.5-1.0	10	44	39
5 80HD23.7	5(3.7)	3" (80)	3	DOL	22-0.5	29-1.2	10	-	44
6 100HD23.7	5(3.7)	4" (100)	3	DOL	13-1.0	23-1.65	10	-	44
7 80HD25.5	7.5(5.5)	3" (80)	3	DOL	28-0.5	38-1.3	10	-	72
8 100HD25.5	7.5(5.5)	4" (100)	3	DOL	19-1.0	29-2.0	10	-	75
9 150HD25.5	7.5(5.5)	6" (150)	3	DOL	12-1.5	25-2.4	10	-	78
10 100HD27.5	10(7.5)	4" (100)	3	DOL	25.5-1.0	38-1.85	10	-	80
11 150HD27.5	10(7.5)	6" (150)	3	DOL	17-1.5	28-2.65	10	-	81
12 100HD211	15(11)	4" (100)	3	DOL	36-1.0	50-1.8	10	-	125
13 100HD215	20(15)	4" (100)	3	DOL	46-1.0	59-1.9	10	-	134
14 150HD211	15(11)	6" (150)	3	DOL	26.5-1.5	44-2.7	10	-	124
15 150HD215	20(15)	6" (150)	3	DOL	35-1.5	54-2.4	10	-	133

※ Excludes Cable & Outlet Weight.

HDG Series

SUBMERSIBLE SLURRY DEWATERING PUMPS

- Optimizing HDG series designed with hardened ductile cast iron (FCD-700) agitator, for maximum stirring and pump action for slurry applications.
- Standard accessories include: cable with an epoxy resin sealed water-resistant cable base, Auto-cut motor protector, double mechanical seals, oil seal design, and High Solid Epoxy coating.
- High efficient special impeller design in High Chrome Alloy steel (HiCrFC), with a hardness of 55 - 60 Rockwell, to stand high abrasive applications.



Agitator

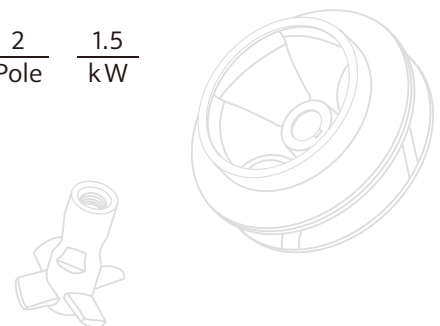


SPECIFICATIONS

Spec.	Description
Liquid Temp.	0~40°C (32~104°F)
Motor	2P (3000rpm) • Dry Motor
Insulation	Class F • Class H
Protection	IP68
Protector	Auto-cut
M.seal Type	Double M.seals
Impeller Type	Open • Close
Item	Material
Outer Cover	SUS304 / X5CrNi18-10
Upper Cover	FC200 / GG-20
Motor Frame	FC200 / GG-20
Shaft	SUS403 / X5Cr13 • SUS304 / X5CrNi18-10
M.seal	CA/CE & SiC/SiC
Casing	FC200 / GG-20
Impeller	HiCrFC
Wear plate	HiCrFC (For Open)
Wear ring	HiCrFC (For Close)
Agitator	FCD700 / GGG-70
Cable	VCT or H07RN-F

PRODUCT NOMENCLATURE

$\frac{80}{\text{Discharge mm}}$
 $\frac{\text{HDG}}{\text{Type}}$
 $\frac{2}{\text{Pole}}$
 $\frac{1.5}{\text{kW}}$

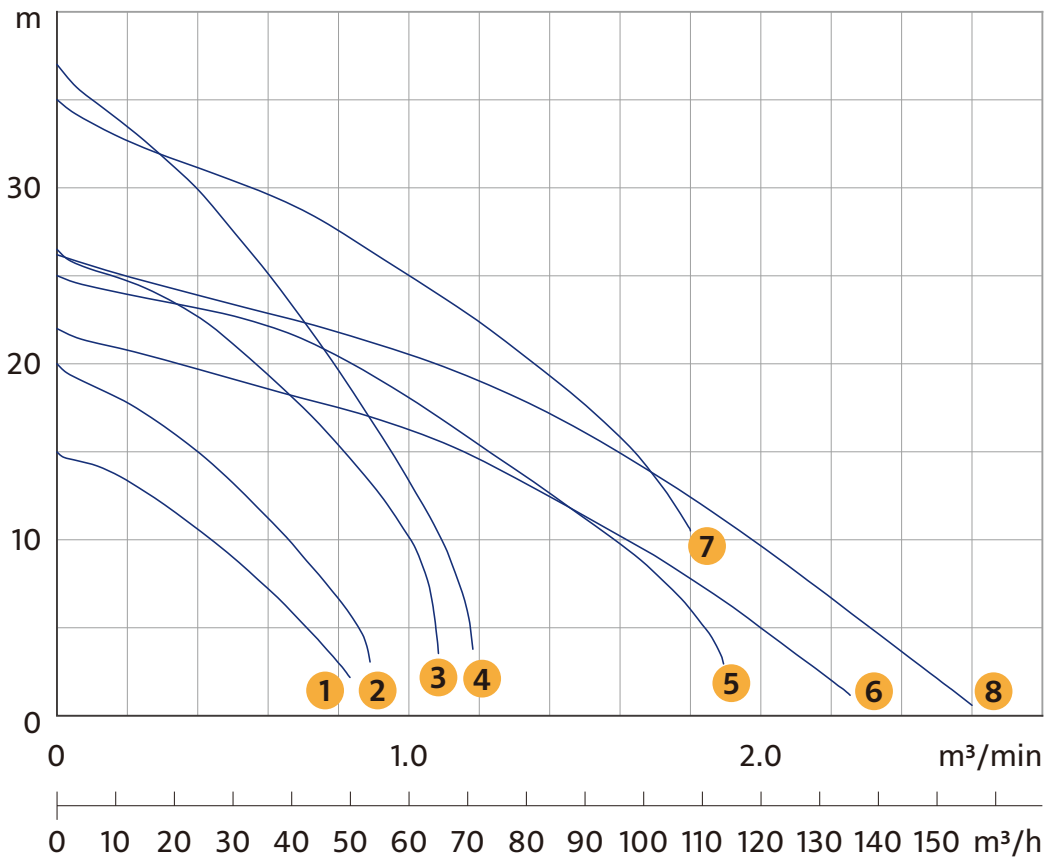


APPLICATIONS

- Civil engineering, dewatering, tunneling, groundworks, mining, and manhole sewer
- Industrial wastewater dewatering of fluids containing solid sediments
- Portable use for contractors, installers, and industry



PERFORMANCE CURVES AND SPECS



Model	Output HP(kW)	Discharge Inch(mm)	Phase Ø	Start Method	Standard	Max.	Solid Passage mm	Weight kg	
					m-m³/min			1Ø	3Ø
1 80HDG21.5	2(1.5)	3" (80)	1	Capacitor	9-0.5	15-0.9	10	41	36
			3	DOL					
2 80HDG22.2	3(2.2)	3" (80)	1	Capacitor	13-0.5	20-0.95	10	45	40
			3	DOL					
3 80HDG23.7	5(3.7)	3" (80)	3	DOL	21-0.5	26.5-1.2	10	-	45
4 80HDG25.5	7.5(5.5)	3" (80)	3	DOL	27-0.5	37-1.2	10	-	73
5 100HDG25.5	7.5(5.5)	4" (100)	3	DOL	18-1.0	25-1.9	10	-	76
6 150HDG25.5	7.5(5.5)	6" (150)	3	DOL	11-1.5	22-2.3	10	-	79
7 100HDG27.5	10(7.5)	4" (100)	3	DOL	24.5-1.0	35-1.8	10	-	81
8 150HDG27.5	10(7.5)	6" (150)	3	DOL	16-1.5	26-2.6	10	-	82

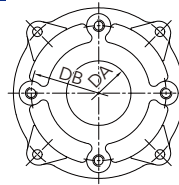
※ Excludes Cable & Outlet Weight.



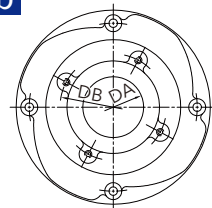
ACCESSORIES : ADAPTER

ADTC (Adapter Connection) Pump model, can be applied with flange type adapter or check valve is an optional accessory for groundwater, deep well or wellpoint dewatering applications.

a



b



Adapter Connection (ADTC)

Optional ADTC (adapter Connection) Casing

Figure	Model	mm		Bolt Size	Screw Number
		DA	DB		
a	80HD21.5/22.2/23.7	67	140	M12*25L	4
a	100HD23.7	80	150	M12*25L	4
a	100HD25.5/27.5	87	150	M12*25L	4
a	150HD25.5/27.5	97	175	M12*25L	4
b	100HD211/215	100	175	M12*30L	4
b	150HD211/215	100	175	M12*30L	4



PRODUCT FEATURES



1 Epoxy Cable Base

An epoxy resin seal cable base prevents moisture from entering the motor through the core wires.



2 Auto-cut Protector

Automatic On / Off motor protector to prevent motor burn out due to high temperature and excess amperage draw.



3 High Efficiency Dry Motors

All stator coils are treated with insulating varnish procedures to achieve the best insulation, efficiency and durability.



4 Double Mechanical Seals

Superior abrasion resistant mechanical seal is manufactured with silicon carbide to ensure the best seal effect.



Close Impeller



Open Impeller



Professionalism · Innovation · Service · Commitment
HCP PUMP MANUFACTURER CO., LTD.
www.hcppump.com



YouTube



Selection system



Catalog